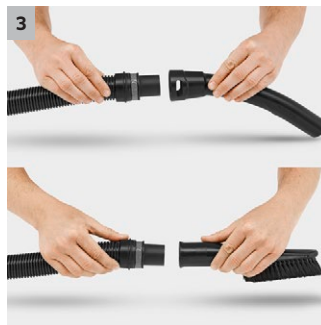
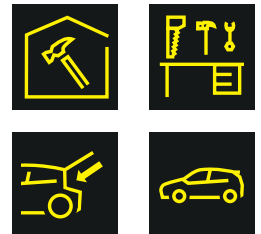




WD 5 Premium

The WD 5 Premium is an extremely powerful and efficient multi-purpose vacuum cleaner with a 25-litre stainless steel container, a flat pleated filter in a removable filter box, filter cleaning etc.



1 Patented filter removal technology

- Quick and easy removal of the filter from the filter box - without contact with dirt.
- For wet and dry vacuuming without filter replacement.

2 Optimally developed: Floor nozzle and suction hose

- For the best cleaning results - whether dry, wet, fine or coarse dirt.
- For maximum vacuuming convenience and flexibility.

3 Removable handle

- Different nozzles can be directly attached to the suction hose.
- For easy vacuuming - even in confined spaces.

4 Outstanding filter cleaning

- Strong pulse air streams move the dirt from the filter into the container at the push of a button.
- The full suction power is quickly restored.



WD 5 Premium

- Removable filter box with flat pleated filter
- Filter cleaning at the push of a button
- Optimally developed accessories for perfect cleaning results

Technical data

Order No.	1.348-231.0	
EAN code	4039784916548	
Actual suction power*	Air watts	240
Energy use	W	1100
Container capacity	l	25
Container material	stainless steel	
Standard accessory ID	mm	35
Power cable	m	5
Current type	V / Hz	220-240 / 50-60
Weight	kg	8.7
Dimensions (L × W × H)	mm	418 × 382 × 652

Equipment

Suction hose	m / mm	2.2 / 35	Convenient 3-in-1 carrying handle	■
Removable handle with electrostatic protection		■	Sturdy bumper	■
Suction tubes	piece(s) / m / mm	2 × 0.5 / 35 / plastic	Accessory storage	■
Wet and dry floor nozzle		switchable floor nozzle with 2 rubber and 2 brush strips	Cable hook	■
Flat pleated filter		in removable filter box	Storage space for small parts	■
Fleece filter bag	piece(s)	1		
Crevice nozzle		■		
Suction tube for coarse dirt	m / mm	-		
Filter cleaning function		■		
Blower function		■		
Parking position		■		

■ Included in the scope of supply. * Measured at the suction tubes according to the IEC 60312 standard.

WD 5 PREMIUM 1.348-231.0

KÄRCHER



		Order No.	Quantity				Price	Description	
Filters									
Flat pleated filter	1	2.863-005.0	1 piece(s)					Flat pleated filter for Kärcher Home & Garden multi-purpose vacuum cleaners from the MV 4 to MV 6 ranges and WD 4 to WD 6 ranges. The embedding in the designated filter box on the device allows filter exchange without coming into contact with dirt.	■
Fleece filter bag	2	2.863-006.0	4 piece(s)					Extremely tear-resistant fleece filter bags with a high dust retention rate. Significantly longer suction intervals compared with paper filter bags. For all Kärcher Home & Garden multi-purpose vacuum cleaners from the MV 4 to MV 6 ranges and WD 4 to WD 6 ranges.	□
Nozzles									
Switchable wet and dry floor nozzle with integrated parking nib	3	2.863-000.0	1 piece(s)					Switchable wet and dry vacuum nozzle for perfect dirt intake. Easy adaptation to wet or dry dirt using foot switch. For all Kärcher Home & Garden multi-purpose vacuum cleaners.	■
Extra long crevice nozzle	4	2.863-223.0	1 piece(s)					Fully redesigned, extra long crevice nozzle. Ideal for hard-to-reach places inside the car (for example gaps and crevices). Suitable for all Kärcher Home & Garden multi-purpose vacs.	□
Car nozzle/suction nozzle for large areas	5	2.863-145.0	1 piece(s)					Handy car vacuuming tool for quick and easy cleaning - from the footwell to the boot.	□
Suction brush with hard bristles	6	2.863-146.0	1 piece(s)					Brush for thoroughly cleaning car upholstery and carpets. Hard brush easily removes dried dirt.	□
Suction brush with soft bristles	7	2.863-147.0	1 piece(s)					Brush with extra soft bristles for gentle cleaning of sensitive surfaces in the car, e.g. dashboards or centre consoles.	□
Accessory kits									
Renovation kit	8	2.863-220.0	4 -part					The renovation kit can effectively tackle coarse dirt and fine dust. It is suitable for Kärcher Home & Garden multi-purpose vacuum cleaners MV 5 to MV 6, WD 5 to WD 6 and WD 7.000 to WD 7.999.	□
Car interior cleaning kit	9	2.863-225.0	7 -part					Optimised car interior cleaning kit for comprehensive interior car cleaning: From dashboards to car seats, from upholstered surfaces to foot mats, from crevices and gaps to car boots.	□
Suction brush kit	10	2.863-221.0	2 -part					The suction brush kit enables thorough interior car cleaning of dashboards, foot mats, upholstered surfaces, etc., and is suitable for use on all materials. For all Home & Garden multi-purpose vacuum cleaners.	□
Household kit	11	2.863-002.0	2 -part					The household kit contains a switchable dry vacuum nozzle and an upholstery nozzle. This practical accessory kit is suitable for all Kärcher Home & Garden multi-purpose vacuum cleaners.	□
Vacuum kit for power tools	12	2.863-112.0	2 -part					Flexible suction hose (1 m) including adapter for connection to the exhaust air vent of power tools (e.g. jigsaws, grinders, drills, planes, etc.), for dirt-free DIY.	□
Coarse dirt kit	13	2.637-945.0	5 -part					Comprehensive suction kit with increased nominal width (60 mm) for all types of coarse dirt, such as sawdust, rubble, gravel, grit, small stones, foliage, soil or bark mulch.	□
Car interior cleaning kit	14	2.862-128.0	7 -part					Comprehensive accessory kit for all car cleaning tasks. For vacuuming car boots, footwells, dashboards, seats, side pockets, foot mats, etc.	□

■ Included in the scope of supply. □ Available accessories.

WD 5 PREMIUM 1.348-231.0



		Order No.	Quantity				Price	Description	
Special applications									
Ash filter/coarse dirt filter Basic	15	2.863-139.0						Coarse dirt/ash filter for cleaning fireplaces, tiled stoves, barbecues, sauna ovens, etc., as well as removing coarse dirt.	<input type="checkbox"/>
Ash filter/coarse dirt filter Premium	16	2.863-161.0						Premium coarse dirt/ash filter with fine filter suitable for cleaning fireplaces, tiled stoves, barbecues, sauna ovens, etc., as well as removing coarse dirt.	<input type="checkbox"/>
3.5 m suction hose extension	17	2.863-001.0						The 3.5 m long suction hose extension is suitable for all Kärcher multi-purpose vacuum cleaners from the Home & Garden area and ensures a larger working radius and greater free movement.	<input type="checkbox"/>
Extension suction tube	18	2.863-148.0						Practical extension suction tube for larger operating radius. The extension of the suction tube is recommended specially for applications in places that are difficult to access, e.g. high ceilings.	<input type="checkbox"/>
Drill dust catcher	19	2.863-234.0						The new accessory for our multi-purpose vacuum cleaners WD 2-6 allows safe and dust-free holes in conventional wall and ceiling surfaces. Drill dust is suctioned directly from the drill hole.	<input type="checkbox"/>

■ Included in the scope of supply. □ Available accessories.